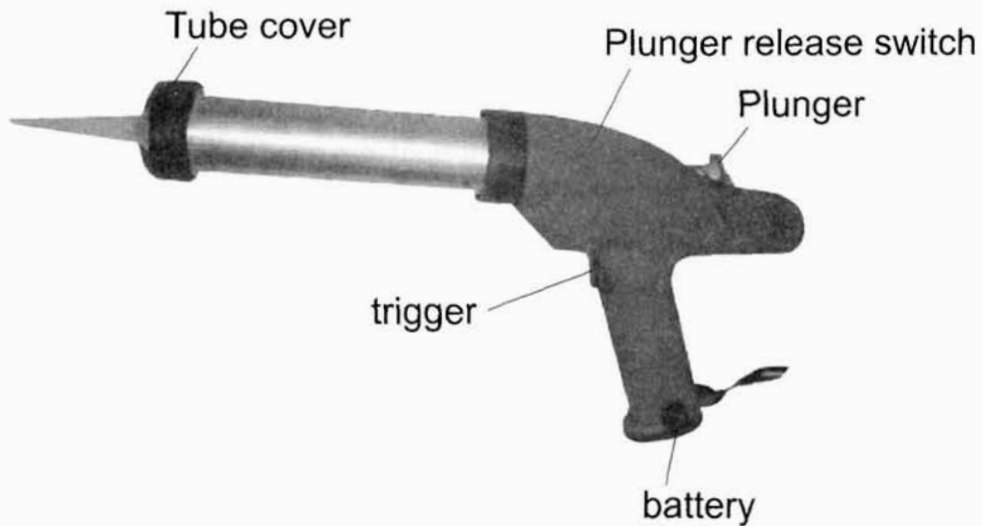




## 7.2 Volt Cordless Caulking Gun

**Model No.: 692**



**PT31001**

**Assembly and operating Instruction Manual**

---

**SPECIFICATIONS**

- **Battery: 7.2V DC, 1.2AH Nicad Battery**
- **Speed: 0-270mm/Min**
- **Tool Weight: 4.46LBS**
- **3-5 Hours Charger with UL listed Adaptor**

**Keep this manual and invoice in a safe and dry place for future reference.**

You will need this manual for the safety warnings and precautions, assembly instructions, operating and maintenance procedures, parts and diagram. Keep your invoice with this manual. Write the invoice number on the inside of the front cover.

**Safety Warnings and Precautions**

**Warning:** When using tool, basic safety precautions should always be followed to reduce the risk of personal injury and damage to the equipment.

**Read all instructions before using this tool!**

- 1. Keep work area clean.**
- 2. Do not use machines or power tools in damp or wet locations.** Do not expose to rain.
- 3. Keep work area well lighted.** Do not use tools in the presence of flammable gased or liquids.
- 4. Keep children away from work area.** Children must never be allowed in the work area.  
Do not let them handle machines, tools, or extension cords.
- 5. Store idle equipment.** When not in use, tools must be stored in a dry location to inhibit rust.  
Always lock up tools and keep out of reach of children.
- 6. Do not force tool.** Power tools perform better and more safely at the rate for which it was intended.  
Do not use inappropriate attachments in an attempt to exceed the tool capacity. A Sharp blade will ease cutting and prolong battery charge life.
- 7. Use the right tool for the job.** Do not attempt to force a small tool or attachment to do the work of a larger industrial tool. Do not use a tool for a purpose for which it was not intended.
- 8. Dress properly.** Do not wear loose clothing or jewelry. They can be caught in moving parts.  
Protective, electrically non-conductive clothes and non-skid footwear are recommended when working. Wear restrictive hair covering to contain long hair.
- 9. Use eye and ear protection.** Always wear ANSI approved impact safety goggles.
- 10. Disconnect power.** Remove battery when not in use.
- 11. Stay alert.** Watch what you are doing, use common sense. Do not operate any tool when you are tired.
- 12. Replacement parts and accessories.** When serving, use only identical replacement parts. Use of any other parts will void the warranty. Only use accessories intended for use with this tool. Approved accessories are available from.

**Note:** The warning and instructions contained in the instruction manual cannot cover all possible conditions and situations that may occur when using this product. It must be understood that common sense and caution are factors which cannot be built into this product. These factors must be supplied by the person operating the tool.

1. Read all instructions and warning on the battery before charging the battery.
2. To avoid accidents, charge the supplied battery only. Do not use a different charger with this battery.
3. Do not expose the battery to rain or wet conditions.
4. To avoid damage of cable and plug, never pull the cable to disconnect the charger.
5. Do not use the charger if the cable or plug are damaged.
6. Repairs should be carried out by experts only.
7. Do not touch the battery poles with any conductive source.
8. Do not store the battery in a box with other metal objects.
9. Do not throw the battery in a fire. Dispose of or recycle properly.

#### **Unpacking**

When unpacking, check the parts diagram and parts number listing to make sure that all parts are included. If any part of the tool is missing or broken, please return it along with your original sales receipt to us as soon as possible.

#### **Charging Battery**

The battery will not be fully charged when you receive it. To maximize the storage capacity of the battery it should be completely discharged, then fully recharged, for 3-5 cycles prior to first use. For optimal life span, completely discharge battery after every use. Follow the instructions below to charge battery.

##### **Battery Charging with Standard Charger, (1 piece charger with adapter):**

- Step 1: Plug AC adapter into 120 volt wall outlet.
- Step 2: Plug Pin Jack from AC adapter into 7.2 volt DC Charging Base.
- Step 3: Insert Battery into charging base, lining up all 3 contacts. A red LED light will come on when Battery begins charging in.
- Step 4: Charge Battery for 3-5 hours for full charge from fully depleted state. Note: red LED will not go off until Battery is removed from Charger Base.

**\* Warning:** Never leave any battery unattended while charging due to potential fire hazard.

**Note:** The operation time of a new battery will ramp up as it is properly used and recharged. To maximize battery capacity and performance, completely discharge and recharge this battery at 3-5 times prior to first use. To prolong battery life, fully discharge and recharge once each month.

**Warning:** If two or more batteries are to be charged, allow the Charging Base cool down between charges.

### **Operation**

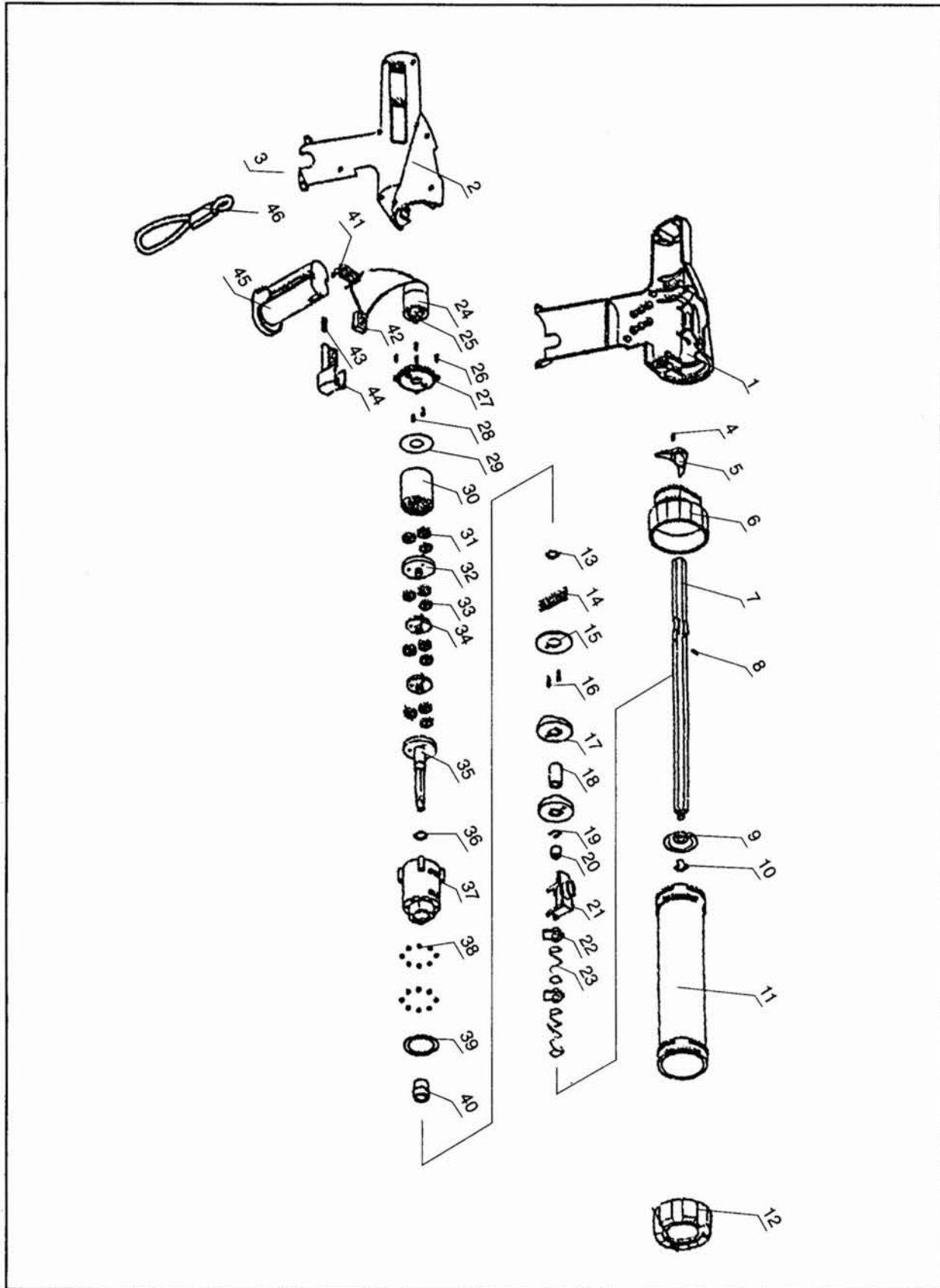
To install a tube of silicon follow the steps shown below:

1. Remove the battery from the gun housing.
2. Depress the plunger release switch and pull back on the plunger until it stops at the tube holder cap(6).
3. Unscrew the Tube Holder Cover (#12).
4. Put the new silicon tube into the Aluminum Tube Holder.
5. Cut tip of nozzle to desired width.
6. Screw tight the Tube Holder cover (#12).
7. Put the battery (#45) into the gun housing.
8. To activate depress the Trigger Switch (#44).
9. To stop the flow of silicon release trigger. Flow will slow once trigger is released. To completely stop the flow slightly loosen the tube holder cover. If desired push plunger release switch forward and retract plunger.
10. After completing use of the gun, always fully charge battery before next use.
11. Always remove the battery before making any adjustments to the gun.

### **Maintenance**

1. After completing use of the gun, always remove all the Tube Holder and the Tube Holder Cap.
2. Regularly inspect screws and Tube Holder Cap to insure that they are properly tightened.
3. Keep the Tube Holder and Piston Joint clean and in proper working order.
4. Always release the Forwarding Shaft back to the correct position after use.
5. Keep motor air vents clean of dust and debris Vacuum periodically.
6. If the tool is not operating normally, making unusual noises, or appears defective, stop using it immediately and get it repaired by a qualified technician.
7. Clean tool with a damp cloth and light detergent. Do not use solvents as they can damage and crack the plastic parts.

Parts Diagram



**Part Number Listing**

<b>Item #</b>	<b>Description</b>	<b>Qty</b>
1.	Housing A	1
2.	Housing B	1
3.	Tapping Screw	11
4.	Tapping Screw	1
5.	Puller	1
6.	Tube Holder Cap	1
7.	Hex Shaft	1
8.	Pin	1
9.	Piston Joint	1
10.	Nut	1
11.	Aluminium Tube Holder	1
12.	Tube Holder Cover	1
13.	Cotter Pin	1
14.	Spring	1
15.	Cover Plate	1
16.	Tapping Screw	2
17.	Cover Gear	2
18.	Spacer	1
19.	Cotter Pin	1
20.	Shaft Cover	1
21.	Driving Plate	1
22.	Stop-Driving Plate	2
23.	Spring	2

<b>Item #</b>	<b>Description</b>	<b>Qty</b>
24.	Motor	1
25.	Motor Gear	1
26.	Tapping Screw	4
27.	Gear Housing Plate	1
28.	Stud Screw	2
29.	Gear Housing Plate	1
30.	Internal Gear	1
31.	Planet Gear	3
32.	Carrier Gear	1
33.	Planet Gear	9
34.	Carrier Gear	2
35.	Main Shaft	1
36.	Main Shaft Plate	1
37.	Gear Housing	1
38.	Steel Ball	12
39.	Steel Ball Cover	1
40.	Shaft Cover	1
41.	Power Connector	1
42.	Moving Lock	1
43.	Spring	1
44.	Trigger Switch	1
45.	Battery	1
46.	Belt	1
47.		